



# 2025 GULL LAKE SAILING CLUB ISLAND RACE

**Sunday, October 5, 2025**

Gull Lake, Michigan

For Monohull Sailboats

[www.gullakesailingclub.org](http://www.gullakesailingclub.org)

More info: [gullakesunfish@gmail.com](mailto:gullakesunfish@gmail.com)



**2024 Gull Lake Sailing Club  
Island Race Championship  
Gull Lake, Michigan  
Notice of Race  
October 5, 2025**

**1 RULES**

- 1.1 The event is governed by the rules as defined in the 2025-2028 Racing Rules of Sailing with US Sailing Prescriptions.

**2 SAILING INSTRUCTIONS**

- 2.1 The sailing instructions follow this Notice and shall be available at [www.gulllakesunfishclub.org](http://www.gulllakesunfishclub.org).

**3 COMMUNICATION**

- 3.1 The online official notice board is located at <https://www.facebook.com/groups/gulllakesailingclubgroup>.

**4 ELIGIBILITY AND ENTRY**

- 4.1 The event is open to all boats of the Sunfish Class and Portsmouth rating One-Design vessels. Gull Lake Sailing Club 2025 paid members are automatically entered. Non-members shall complete the club form, waiver, and pay a \$10 entry fee.
- 4.2 Eligible boats may enter by completing the membership application and entry form and submit it, together with the required fee, to Larry Carter, Gull Lake Sailing Club Treasurer, 263 S Gull Lake Dr, Richland, MI 49083, before competing.
- 4.3 Boats shall notify the Commodore by email to [gulllakesunfish@gmail.com](mailto:gulllakesunfish@gmail.com) by Friday, September 27, 2024 at 5:00 pm EDT of their intent to compete.
- 4.4 Late entries will not be accepted, that is, entry form and fees shall be submitted in advance for race to count.

**5 CREW LIMITATIONS**

- 5.1 The following crew limitations apply: limitations as provided in Class rules for competing boats.

**6 SCHEDULE**

- 6.1 Dates of race: Sunday, October 5, 2025.
- 6.2 Number of races: There shall be one Island Race.
- 6.3 The scheduled time of the warning signal for the Sunfish Class is 1330 EDT. The Sunfish Class start shall serve as the warning signal for the Portsmouth rating One-Design Class.

**7 EQUIPMENT INSPECTION**

- 7.1 Each boat shall be in compliance with its current Class Rules.

**8 VENUE**

- 8.1 The launch site is at Prairieville Township Park-Gull Lake, 15475 S. M-43 Hwy., Hickory Corners, MI 49060.
- 8.2 The racing area is Gull Lake, Hickory Corners and Richland, Michigan, with the starting area towards the north end.

**9 COURSES**

- 9.1 The course to be sailed will be from the starting line just off Prairieville Township Park-Gull Lake, south-southeast to Gull Island which may be left to port or starboard, then north-northwest back to the starting line.
- 9.2 The marks that may be used are orange balls or cylinders. Gull Island is a mark.
- 9.3 To shorten the course, the race committee will display flag "S" with two sound signals and will also position near a mark, establishing a new finish line, and making repeated sound signals. Boats must then sail across the "new" finish line. This changes rule 32.2.

**10 PENALTY SYSTEM**

- 10.1 RRS 44.1 is changed so that the Two-Turns Penalty is replaced by the One-Turn Penalty.

**11 SCORING**

- 11.1 The scoring system is as follows: Low Point Scoring System per Appendix A4.
- 11.2 There are no discard races.

**12 RISK STATEMENT**

- 12.1 RRS 3 states: 'The responsibility for a boat's decision to participate in a race or to continue to race is hers alone.' By participating in this event each competitor agrees and acknowledges that sailing is a potentially dangerous activity with inherent risks. These risks include strong winds and rough seas, sudden changes in weather, failure of equipment, boat handling errors, poor seamanship by other boats, loss of balance on an unstable platform and fatigue resulting in increased risk of injury. Inherent in the sport of sailing is the risk of permanent, catastrophic injury or death by drowning, trauma, hypothermia or other causes.

**13 INSURANCE**

- 13.1 Each participating boat is recommended to be insured with valid third-party liability insurance with a minimum cover of \$300,000 per incident or the equivalent.

**14 PRIZES**

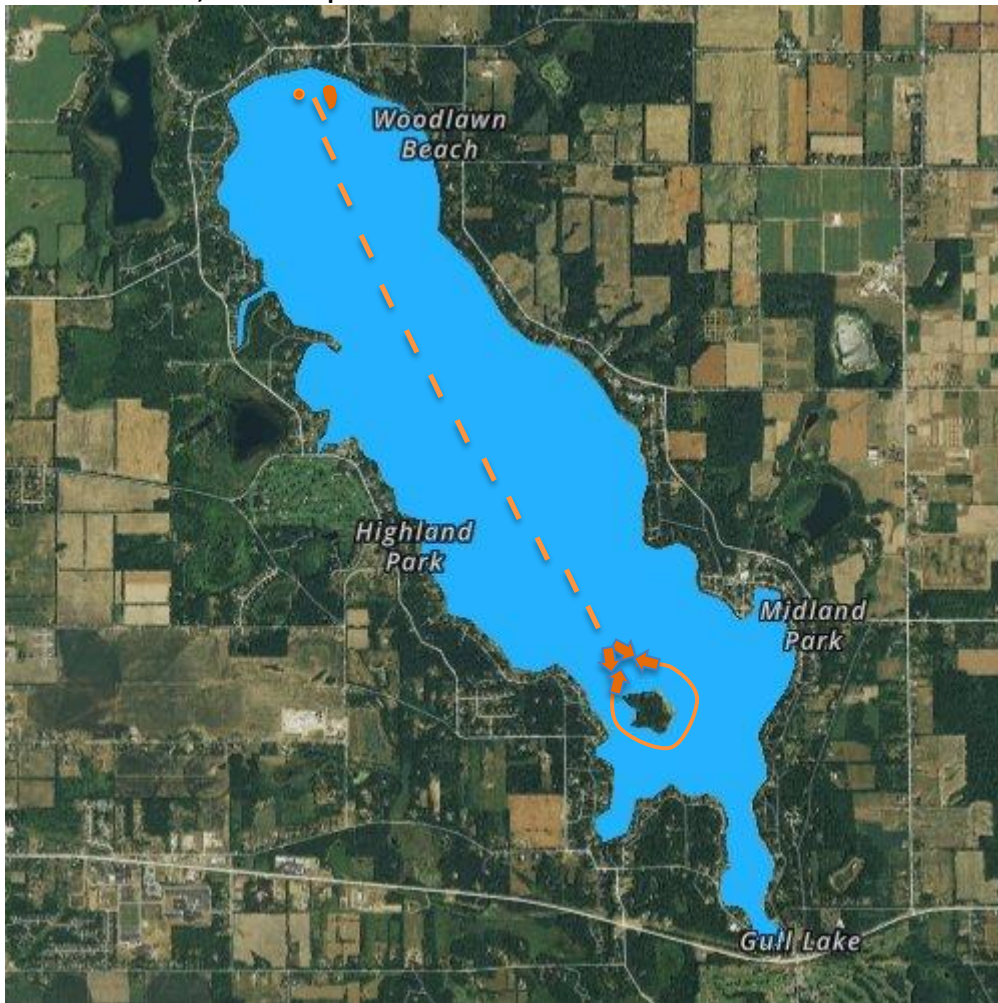
- 14.1 Prizes will be given as follows: Top finisher in each Class. Prize giving to be held at Gull Lake Sailing Club Annual Banquet.

**15 FURTHER INFORMATION**

- 15.1 For further information please contact Gail Turluck, [gulllakesunfish@gmail.com](mailto:gulllakesunfish@gmail.com), 269.447.1130.

## APPENDIX A

Start at North End of Gull Lake between Race Committee Boat and mark.  
Sail to Gull Island, leave it to port or starboard. Sail to finish line at North End of Gull Lake.





2025 Gull Lake Sailing Club  
Island Race Championship  
October 5, 2025  
SAILING INSTRUCTIONS

**1 RULES**

- 1.1 The event is governed by the rules as defined in *The Racing Rules of Sailing with US Sailing Prescriptions*. US Sailing Appendix V1 applies.
- 1.2 Class rules requiring competitors to be members of the Class Association do not apply. It is recommended competitors be members of their Class Association.

**2 CHANGES TO SAILING INSTRUCTIONS**

- 2.1 Any change to the sailing instructions will be emailed before 1800 the day before the day it will take effect.
- 2.2 Changes to a sailing instruction may be made on the water by verbal announcement from the Race Committee boat.

**3 COMMUNICATIONS WITH COMPETITORS**

- 3.1 Notices to competitors will be posted on the official notice board located at <https://www.facebook.com/groups/gulllakesailingclubgroup>.

**4 SCHEDULE OF RACE**

- | 4.1 | <b>Island Race</b> | <b>Time</b> | <b>Notes</b>                                 |
|-----|--------------------|-------------|--|
|     | Rigging            | 1200        | Prairieville Twp. Park-Gull Lake Launch Ramp |
|     | Race Warning       | 1330        |  |
- 4.2 To alert boats that a race will begin soon, the orange starting line flag will be displayed with sounds before a warning signal is made.

**5 CLASS FLAG**

- 5.1 Sunfish: The Class flag will be a white flag with red Sunfish emblem.  
Portsmouth: The Class flag will be the Gull Lake Sailing Club burgee, maroon edged blue field flag with Gull Lake shape in white.

**6 RACING AREA**

- 6.1 The racing area is Gull Lake, Hickory Corners and Richland, Michigan.

**7 COURSE**

- 7.1 The diagram shows the course. Gull Island may be passed to port or starboard.

**8 MARKS**

- 8.1 Marks are orange or red balls, orange cylinders, and Gull Island.

**9 THE START**

- 9.1 Races will be started using RRS 26 with the warning signal made five minutes before the starting signal. The Sunfish Class shall start first, the Portsmouth Class shall start five minutes later.
- 9.2 The starting line is between a staff displaying an orange flag on the signal vessel and the course side of the opposite end starting mark.
- 9.3 If any part of a boat's hull is on the course side of the starting line at her starting signal and she is identified, the race committee will attempt to hail her sail number. Failure to hail her number, failure of her to hear such a hail, or the order in which boats are hailed will not be grounds for a redress for request. This changes RRS 62.1(a).

**10 THE FINISH**

- 10.1 The finishing line is between a staff displaying an orange or blue flag on the signal boat and the orange buoy at the other end.
- 10.2 If the race committee is absent when a boat finishes, she shall report her position in relation to nearby boats to the race committee at the first reasonable opportunity.

**11 PENALTY SYSTEM**

- 11.1 RRS 44.1 is changed so that the Two-Turns Penalty is replaced by the One-Turn Penalty.

**12 TIME LIMITS [AND TARGET TIMES]**

- 12.1 The Mark 1 Time Limit, Race Time Limit (see RRS 35), and the Finishing Window are shown in the table below.

Time limits and target times are as follows:

Class	Mark 1 time limit	Race Time limit	Finishing Window	Target total race time
Sunfish	1 hr. 30 min.	3 hrs.	30 min.	2 hrs.
Portsmouth	1 hr. 30 min.	3 hrs.	30 min.	2hrs.

- 12.2 If no boat has passed the first mark within the Mark 1 Time Limit, the race will be abandoned.
- 12.3 The Finishing Window is the time for boats to finish after the first boat sails the course and finishes. Boats failing to finish within the Finishing Window, and not subsequently retiring, penalized or given redress, will be scored Time Limit Expired (TLE) without a hearing. A boat scored TLE shall be scored points for the finishing place one more than the points scored by the last boat that finished within the Finishing Window. This changes RRS 35, A5.1, A5.2 and A10.
- 12.4 Failure to meet the Target Time will not be grounds for redress. This changes RRS 62.1(a).



### 13 HEARING REQUESTS

- 13.1 The protest time limit is 1800 the same day of racing.
- 13.2 Hearing request forms are available at <https://www.facebook.com/groups/gullakesailingclubgroup> or from the Race Committee. Hearing Decision forms are available at <https://www.facebook.com/groups/gullakesailingclubgroup> or from the Race Committee.
- 13.3 Notices will be posted no later than 0900 the following day at <https://www.facebook.com/groups/gullakesailingclubgroup> to inform competitors of hearings in which they are parties or named as witnesses. Hearings will be held on the patio at the Turluck Residence in Richland, Michigan, beginning at 1830 that same following day.

### 14 SCORING

- 14.1 The scoring system is as follows: Low Point Scoring System per Appendix A4.
- 14.2 One race is required to be completed to constitute a championship.

### 15 SAFETY REGULATIONS

- 15.1 All participants shall meet Michigan DNR Safety Rules. See <https://assets.kalkomey.com/boater/pdfs/handbook/michigan-handbook-entire.pdf>.
- 15.2 A boat that retires from a race shall notify the race committee at the first reasonable opportunity.

### 16 OFFICIAL VESSELS

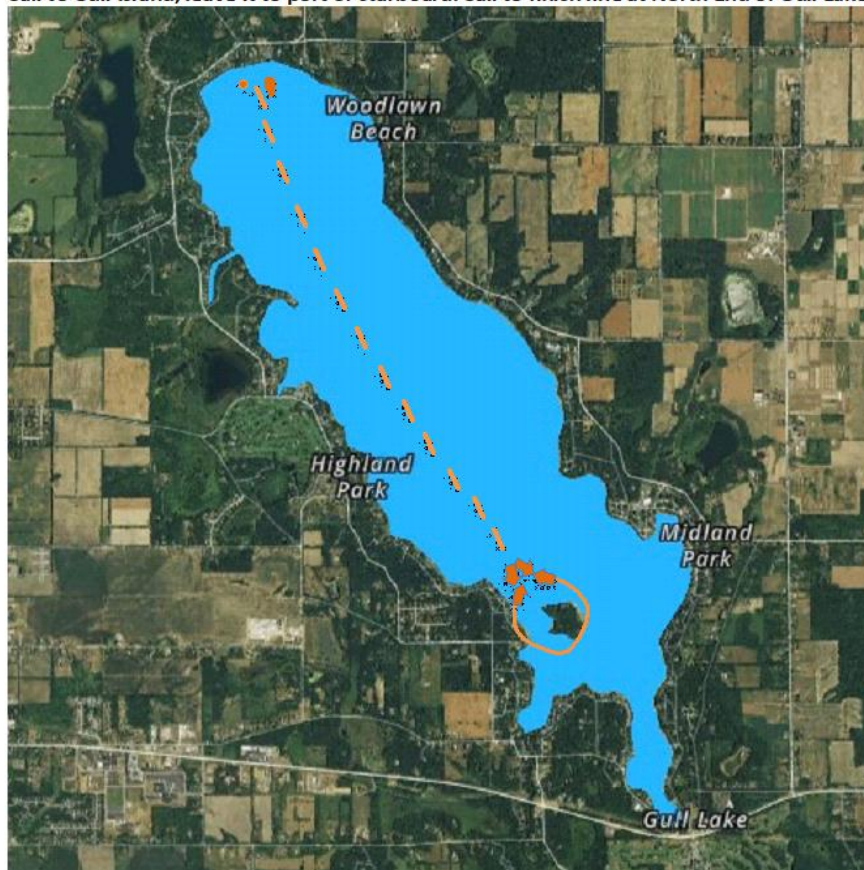
- 16.1 Official vessels will be identified as follows: a boat with a blue Race Committee flag.

### 17 PRIZES

- 17.1 Prizes will be given as follows:  
First place in Class

### COURSE

Start at North End of Gull Lake between Race Committee Boat and mark.  
Sail to Gull Island, leave it to port or starboard. Sail to finish line at North End of Gull Lake.





**2025 Island Race Championship  
Entry Form  
Gull Lake Sailing Club  
Richland, Michigan**

Entries are open to monohull sailboats.

I hereby enter in 2025 Gull Lake Sailing Club Island Race Championship (please print neatly).

Name \_\_\_\_\_

Address \_\_\_\_\_

City \_\_\_\_\_ ST \_\_\_\_\_ Zip \_\_\_\_\_

Phone: \_\_\_\_\_ ☐ Mobile ☐ Home ☐ Work

Email: \_\_\_\_\_

Boat Type: ☐ (fill in Class) \_\_\_\_\_ ☐ Sunfish Sail # \_\_\_\_\_

**Entry Fee**

☐ 2025 GLSC Member entry is automatic, no form required, no cost \$ 0

☐ Non-member Entry \$10

**Emergency Contact**

Name \_\_\_\_\_ Phone \_\_\_\_\_

**All participants shall meet Michigan DNR Safety Rules.** See <https://assets.kalkomey.com/boater/pdfs/handbook/michigan-handbook-entire.pdf>.

**A RELEASE OF LIABILITY SIGNATURE IS REQUIRED FOR EACH PARTICIPANT**

The undersigned, fully recognizing and acknowledging the inherent risk in sailing activities hereby releases the Gull Lake Sailing Club, its officers and agents, any municipalities, any park officers or their agents, from any and all liabilities arising out of, or as a result of, any accident or injury while participating in activities that are sanctioned, promoted or sponsored by the Gull Lake Sailing Club whether deemed through negligence or not on the part of any of the aforementioned persons or entities.

Applicant Signature \_\_\_\_\_ Date \_\_\_\_\_

**THE FOLLOWING MUST BE COMPLETED IF AN APPLICANT IS A MINOR:**

The undersigned Parent or Guardian, fully recognizing and acknowledging the inherent risk in sailing activities, hereby releases the Gull Lake Sailing Club, its officers and agents, any municipalities, any park officers or their agents, from any and all liabilities arising out of, or as a result of, any accident or injury while participating in activities that are sanctioned, promoted, or sponsored by the Gull Lake Sailing Club whether deemed through negligence or not on the part of any of the aforementioned persons or entities.

Parent or Guardian Signature \_\_\_\_\_ Date \_\_\_\_\_

Complete form, sign, and send it with your check payable to Gull Lake Sailing Club,  
Deliver to: Larry Carter, GLSC Treasurer, 263 S Gull Lake Dr, Richland, MI 49083.

**NOTE: Prairieville Township Park-Gull Lake ramp permits must be acquired separately,  
available here: <https://bit.ly/2Ro49lP> or single day with payment card at park entrance.**